



Complete Mitochondrial Genome Sequence and Phylogenetic Status of Halang Pig (*Sus scrofa*)

Tuan Anh Bui¹, Hieu Duc Nguyen² and Thuy Thi Bich Vo^{2*}

¹*Institute of Forensic Science, Ministry of Public Security, Hanoi 100000, Vietnam.*

²*Institute of Genome Research, Vietnam Academy of Science and Technology, Hanoi 100000, Vietnam.*

Authors' contributions

This work was carried out in collaboration between all authors. Author TTBV designed the study and wrote the protocol. Author TAB performed the statistical analysis and wrote the first draft of the manuscript. Authors TAB and HDN managed the analyses of the study and managed the literature searches. All authors read and approved the final manuscript.

Article Information

DOI: 10.9734/AJOB/2018/41995

Editor(s):

(1) Behrouz behrouzi-Rad, Associate Professor, Department of Environment, Ahvaz Branch, Islamic Azad University, Tehran, Iran.

Reviewers:

(1) Jeffrey Marcus, University of Manitoba, Canada.

(2) Chandima D. Dangalle, University of Colombo, Sri Lanka.

(3) Jorge Castro Mejia, Universidad Autónoma Metropolitana-Xochimilco, México.
Complete Peer review History: <http://prh.sdiarticle3.com/review-history/25113>

Original Research Article

Received 21st March 2018

Accepted 2nd June 2018

Published 13th June 2018

ABSTRACT

The complete mitochondrial circular genome sequence of indigenous Halang pig was first determined with 16,722 base pairs (bp) in length (GenBank accession number: KY800118). The nucleotide composition had the order A>C>T>G feature, namely of these were calculated to be 34.67%, 26.20%, 25.78% and 13.32% respectively. In this genome's structure, the gene organization was typical of other pigs (*Sus scrofa*) that contain 13 protein-coding genes, 22 tRNA genes, two rRNA genes and one D-loop region with 1,285 bp in size, all of which are arranged similar in other vertebrates. The derived data of this Vietnamese pig's mitochondrial genome (mtDNA) and others from Asian domestic pigs and wild boars were used to phylogeny reconstruction by Bayesian inference and Maximum likelihood methods. These results show closest evolution relationship between Halang pig and Lantang pig from South China and some domestic and wild pigs from other nearby geographic regions.

*Corresponding author: E-mail: thuytbvo@igr.ac.vn, thuynvdc@yahoo.com;

Keywords: Mitochondrial genome; phylogeny; Halang pig; *Sus scrofa*.

1. INTRODUCTION

The Halang pigs (*Sus scrofa*) are a long-standing Vietnamese native breed in Cao Bang, a northern border province. This pig breed has been recognized and preserved as a source of genetic variation since 2007. The Halang pigs have thin skin, short snout, a saddle cavity on the body, high reproductive performance, high fat deposition rates and gluttony. Historically, there have been many studies about pig breeds between northern mountainous Vietnam and China, especially in their genetic relationships [1, 2]. In recent years, well-known domestic pigs such as Meishan, Jinhuas and Mong Cai have been established and used as a genetic source to develop pig breeds [1,3]. In addition, Vietnam and southern China is thought to be one of the points of origin of the earliest domestic pigs [4].

As known, the origin of domestic animals can be studied by analyzing mtDNA. The gene order of animal mtDNA is simple and conserved and does not seem to undergo genetic recombination. Moreover, mtDNA is usually maternally inherited. Once a mtDNA type is formed in a female, all the descendants of that female carry it, and therefore, the inheritance pattern is clonal through the maternal lineage [1]. The polymorphism of the D-loop sequence in the mtDNA reveals an insight into maternal genetic lineages among species. This is based on high deoxynucleotide substitution rates and rare recombination [5,6]. The repeat regions in the D-loop sequence are highly variable in number, so they are typically removed from the phylogenetic analysis [7].

Here, the first complete mitochondrial genome and general structure of the Halang pig breed was assembled from polymerase chain reaction (PCR)- based Sanger sequencing. From these results, we intend to provide an extra recognition regarding the genetic relationships of the Halang pigs with other pig breeds. The phylogenetic relationship between the Halang pig and 17 indigenous and wild Asian pig breeds in nearby geographic regions will be determined by analysis of the polymorphism D-loop region and the complete coding region from the whole mtDNA sequences. Analyzing the phylogenetic trees showed that Halang pigs have a close relationship to pigs originating from South China.

The hypothesis of migration and formation processes of Halang pigs has been addressed and discussed. This study was undertaken to assist in the future genetic conservation and recovery of this breed.

2. MATERIALS AND METHODS

2.1 Sampling

The genealogy information of Halang pig was investigated and provided by National Institute of Animal Sciences (Hanoi, Vietnam) and local livestock conservation center (Cao Bang, Vietnam). Thirty individuals of Halang pig population were randomly selected for sampling. Genomic DNA was extracted from Halang pig's blood samples by the standard phenol-chloroform method described by [8].

2.2 DNA Amplification and Sequencing

Entire sequences of mtDNA were amplified by PCR in a thermal cycler using 30 primers (Table 1). The PCR amplification reaction in 25 μ L total volume consisted of 12.5 μ L GoTaq® Green Master Mix (Promega, Wisconsin, USA), 1.0 μ L DNA template, 0.5 μ L of each primer (10 ppm), and 10.5 μ L deionizer water. The amplify reaction profiles included an initial denaturation at 94°C for 5 min, followed by 25 cycles, each consisting of 30-45 sec denaturation at 94°C, 30 sec primer annealing in range 53 - 55°C (depend on composition of primers), 30 sec extension at 72°C, and then a final 8 min extension at 72°C. The PCR products were evaluated by electrophoresis through 2.0% (wt/vol) agarose gel which was stained with 0.2 μ g/ ml ethidium bromide solution and visualized under UV light. Post amplified DNA was purified utilizing silica-based membrane technology in the form of a spin column by GeneJET™ PCR Purification Kit (Thermo Fisher Scientific, Henderson Road, Singapore).

Sequencing of PCR products was carried out according to Sanger's method [9]. Sequencing reaction volumes of 10 μ l were performed in 96 well plates on the automated ABI 3500 Genetic Analyzer (Applied Biosystems) at Institute of Genome Research (Hanoi, Vietnam).

Table 1. Thirty primer pairs used for PCR

No	Primer's sequence (5'-3')		Annealing T°C
	Forward	Reverse	
D-loop	AGGAGACTAACTCCGCCAT	GCGGATACTTGCATGTGT	54°C
1	ACTAAGTCAATGCCTATTCTG	CAAATGTATGAAACCTCAG	54°C
2	CTACACAATAACCTCCCAT	TGGCACGAGATTTACCAACT	54°C
3	GCTCATAACGCCTTGCTC	ATTCTTTCATCTTTCCCTT	54°C
4	CACAACCATGCAAGAAGAGACA	ACAACCAGCTATCACCAGGC	54°C
5	CCGTAAGGGAAAGATGAAAG	TATGGTTATTTTACTGGT	54°C
6	CCGTGCAAAGGTAGCATA	CCAACATCGAGGTCGTAA	55°C
7	TGGGGTGACCTCGGAGTAC	AATATGGCGAAAGGTCGGG	54°C
8	CGAGCAGTAGCCAAACA	GGTCGTATCGGAATCGTG	55°C
9	GTATCAGGCTTTAACGTAGA	TGGTAATACTGCTGTCATTC	55°C
10	CACAGAAGCAGCCACAAA	ATGGGATAGGGATAAAGT	55°C
11	ACATAGGATGAATGACAGC	TGGTGAAGTAGTCAGAAAC	55°C
12	GCACTGCCTTGAGCCTAC	GTGTTGAGGTTGCGGTCT	55°C
13	CCCATTATGATTGGGGGTTT	TGCTGTGTATGCGTCAGGAT	55°C
14	CACTTTGTAATCATATTCGTAG	TAGTTGAAAAGGGTAAGC	53°C
15	TTCATCTCACTAACAGCAG	TTGAGTTCGGTTGATTCTG	55°C
16	GCTTCATGCCATTGTAC	TTATAGCGGAATCCTGTG	55°C
17	GCAAGCCAGAATCAACCG	CGAGGAGGATTGAGGTGTT	55°C
18	ATACCACATAGTAAACCCAA	CCTGTAGCCACAAAGAAA	55°C
19	CTAAACACCTCAATCCTCC	TTGGACGTAATCGGTACCG	55°C
20	CCTTGCAAGGTTACTTAT	TTCGGGTTGTGGTTTCTT	53°C
21	CGGTACCGATTACGTCCAA	CCGATTAGATTGATGGATG	55°C
22	ACCAGCTCTATCTGCTTA	GAGGCTTTGATGTTGTTA	55°C
23	ATGATGACTAATAGCAAGCC	GGGATGTAGTCCGAATTG	55°C
24	CATCGGAGACATTGGATT	AGTTGGCTTGAAGTTGAG	55°C
25	CCTACTCCTAGCTGCAGCAG	ATTATGGAGATTACTCGTGG	55°C
26	TCCGCATCATCATTACTA	TTTATGGTGGACTTGGGT	55°C
27	TAATTACCACGAGTAATCTC	TTCTACGAGGTCTGTTCCG	55°C
28	GGAGCATCCATATTCTTT	GGTGTAGTTGTCTGGGTCT	53°C
29	TCGTAGAATGAATCTGAGG	GGTGATACGCATGTTGACTG	55°C

2.3 Data Analyses

All used sequences were partitioned into four geographic regions: Mekong Region, Yellow River Valley, South China, and Yangtze River Region that referred in previous study [10]. Entire sequences of the control region and coding region were assembled by overlapping forward and reverse fragment with EditSeq software (DNASTAR Inc., Madison, WI, USA; Hein and Støvlbæk, 1996) and DNADragon v1.6.0 software (SequentiX, Germany). The tandem repeat motifs 5'CGTGCGTACA3' and 5'ACACAAACC3' of the D-loop sequence were removed from the analysis and multiple sequence alignment was performed [11,12]. Annotation was done using Dogma and MITOS [13,14]. All annotations were manually verified by BLAST analysis against GenBank [15,16]. The data of complete mt genome also deposited in NCBI GenBank with accession number KY800118.

2.4 Phylogenetic Analysis

To ensure the confidence in origin and evolution analysis, both complete coding and D-loop region sequences were used to construct the two separate phylogenetic trees for Halang pigs and other Asian wild boar and domestic pig breeds. Multiple alignments of D loop region of mtDNA sequence were performed using Cluster W algorithm [17] of MEGA 7 version 6.0.6 [18]. Phylogenetic and molecular evolutionary analyses were conducted using MEGA version 7. The results were converted into a readable FASTA format for finding the best-fitted model of each sequence group. The model with lowest Bayesian information criterion is HKY+G. The pairwise distance calculations were estimated by using maximum composite likelihood in MEGA 7. The molecular phylogenetic analysis was performed by the discrete data based on Bayesian Inference method in the Hasegawa-Kishino-Yano model. In the second program, in

BEAST v1.8.3 software [19] with Markov Chain Monte Carlo (MCMC) of 10000000 was used to approximate the posterior probabilities of trees [20]. After that, the best supporting phylogenetic tree was found by Tree Annotator v.1.8.4. Finally, the Figure Tree v1.4.2 software was used to read exporting format file for the phylogenetic tree construction. The tree is rooted using a homologous sequence of Malaysia wild boar (*Sus barbatus*). Bootstrap confidence levels of phylogenetic trees were estimated by 1,000 bootstrap replicates, re-sampling all characters of the control region in each replicate [21]. Genetic distances between Halang pig and other pig breeds were estimated by the Kimura 2-parameter distance matrix using MEGA software version 7 [18].

3. RESULTS AND DISCUSSION

The genome of Halang pig breed is 16,722 bp in its total length that contains 13 protein-coding genes, 22 tRNA genes and one control region (D-loop region) between tRNA-*Phe* and tRNA-*Pro* with 1,285 bp in size (Fig. 1 and Table 2).

The length of 12S *rRNA* and 16S *rRNA* genes is 963 bp and 1,572 bp, respectively. In addition, they are located between the tRNA *Phe* and tRNA *Leu* genes, but separated by the tRNA *Val* gene. Based on Table 2, 22 tRNA genes are distributed in rRNA and protein-coding genes, ranging from 59 to 75 bp in size, which is similar

to the Lantang pig in Guangzhou province, China [22].

The overall base composition is A (34.67%), C (26.20%), T (25.78%) and G (13.32%), in the order A>C>T>G. The location sizes and anticodon of genes in mitochondrial genome sequence are shown in Table 2. In Halang pig's whole mt genome, all of genes are arranged similar as in other *Sus scrofa* and vertebrates. The tandem repeat motif (5'-CGTGCCTACA-3') has 24 repeat sequences, that is much higher than other pig breeds and also to be an unusual character in mitochondrial genome. The more repeat motif numbers are the more chances for hairpin structure leading to errors in copying process. It is thought to have some effect on phylogenetic relationships and evolution of breeds [23].

On both control region and complete coding region trees, Halang pig was reconstructed to be the breed which was most related to the Lantang pig. It is demonstrated by that they were each other's sister taxon and had a shortest genetic distance (0.001) (Figs. 2 and 3). There are two major clades that correspond with two main geographic regions as Mekong and Chinese region. Obviously, Halang pig was clearly clustered into the Asian clade whereas it had significant differences with other pig groups such as Mekong region and some Chinese regions. Although two wild boar (WB) breeds of

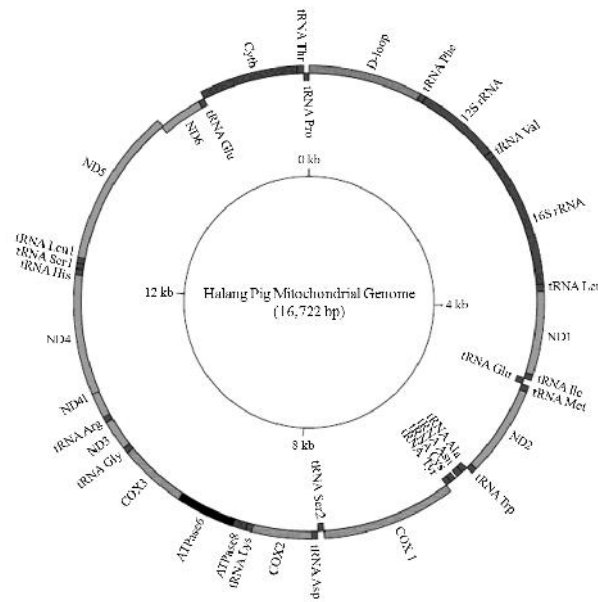


Fig. 1. The circular map of the mt genome of Halang pig

Table 2. Sequence component and location of genes in the mitochondrial genome of the Halang pig

Gene	Codon		Strand	Position		Size (bp)	
	Start	Stop		Start	Stop		
D-loop				1	1285	1285	
tRNA <i>Phe</i>			GAA	H	1286	1355	70
12S rRNA				H	1356	2318	963
tRNA <i>Val</i>			TAC	H	2318	2385	68
16S rRNA				H	2384	3955	1572
tRNA <i>Leu2</i>			TAA	H	3956	4030	75
ND1	ATG	TAG		H	4033	4989	957
tRNA <i>Ile</i>			GAT	H	4988	5056	69
tRNA <i>Gln</i>			TTG	L	5054	5126	73
tRNA <i>Met</i>			CAT	H	5128	5197	70
ND2	ATA	TAG		H	5198	6241	1044
tRNA <i>Trp</i>			TCA	H	6240	6307	68
tRNA <i>Ala</i>			TGC	L	6314	6381	68
tRNA <i>Asn</i>			GTT	L	6383	6457	75
tRNA <i>Cys</i>			GCA	L	6490	6555	66
tRNA <i>Tyr</i>			GTA	L	6556	6620	65
COX1	ATG	TAA		H	6622	8166	1545
tRNA <i>Ser2</i>			TGA	L	8170	8238	69
tRNA <i>Asp</i>			GTC	H	8246	8313	68
COX2	ATG	T--		H	8314	9001	688
tRNA <i>Lys</i>			TTT	H	9002	9068	67
ATPase8	ATG	TAA		H	9070	9273	204
ATPase6	ATG	TAA		H	9231	9911	681
COX3	ATG	T--		H	9911	10694	784
tRNA <i>Gly</i>			TCC	H	10695	10763	69
ND3	ATA	T--		H	10764	11109	346
tRNA <i>Arg</i>			TCG	H	11111	11179	69
ND4l	GTG	TAA		H	11180	11476	297
ND4	ATG	T--		H	11470	12847	1378
tRNA <i>His</i>			GTG	H	12848	12916	69
tRNA <i>Ser1</i>			GCT	H	12917	12975	59
tRNA <i>Leu1</i>			TAG	H	12976	13045	70
ND5	ATA	TAA		H	13046	14866	1821
ND6	ATG	TAA		L	14853	15380	528
tRNA <i>Glu</i>			TTC	L	15378	15446	69
Cytb	ATG	AGA		H	15451	16590	1140
tRNA <i>Thr</i>			TGT	H	16591	16658	68
tRNA <i>Pro</i>			TGG	L	16658	16722	65

Abbreviations: bp: base pairs; rRNA: ribosomal RNA; 16S rRNA: large rRNA subunit; 12S rRNA: small rRNA subunit; tRNA: transfer RNA and italic words are replaced by one amino acid code; ND1-6 and ND4l: genes encoding nicotinamide dinucleotide dehydrogenase subunits 1 to 6 and 4l; ATPase6 and 8: genes encoding adenosine triphosphatase subunits 6 and 8; COX1 to 3: genes encoding cytochrome c oxidase subunits I to III; Cytb: gene encoding cytochrome b. T-- indicates the incomplete termination codon

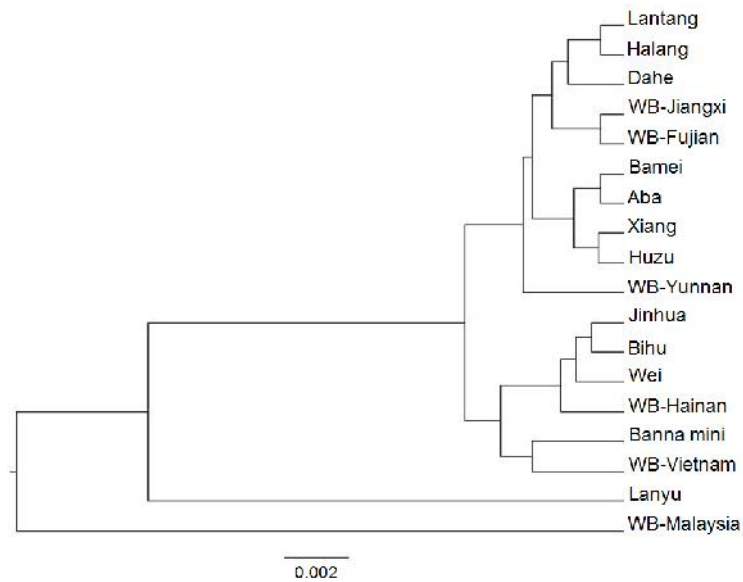


Fig. 2. The phylogenetic relationship was analyzed using discrete data based method (Bayesian Inference) by BEAST v1.8.3 software [19]. The phylogenetic tree was reconstructed by comparison of control region sequences of mitogenome of Halang pig and 17 pig breeds by Tree Annotator software v.1.8.4

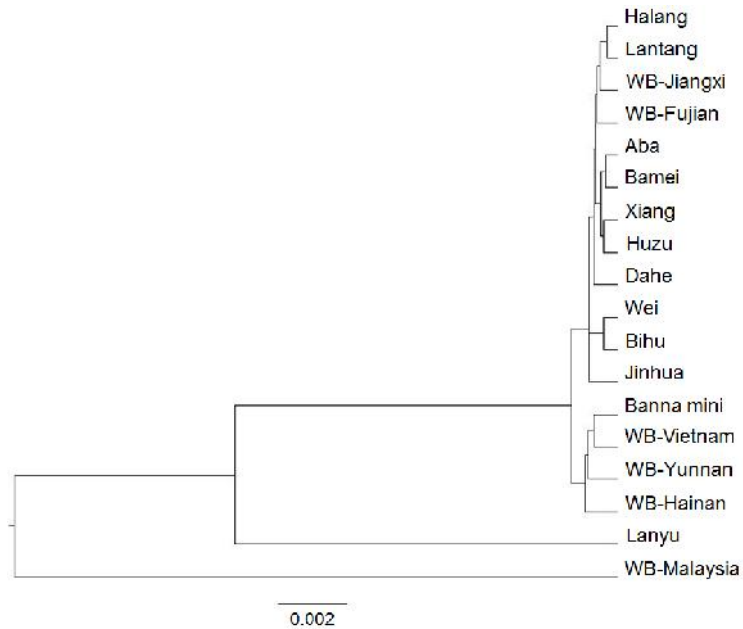


Fig. 3. The phylogenetic relationship was analyzed using discrete data based method (Bayesian Inference) by BEAST v1.8.3 software [19]. The phylogenetic tree was reconstructed by comparison of complete coding region sequences of mitogenome of Halang pig and 17 pig breeds by Tree Annotator software v.1.8.4

WB-Jiangxi and WB-Fujian were included in a sub-clade, they were closely related to the Halang and Langtan pig breeds.

Examination of the phylogenetic trees produced from the D-loop and complete coding region of mtDNA sequence revealed some geographic

relationships among the breeds. The trees confirmed again the monophyletic position of Asian domestic pigs and wild boars. It presented two divergent clusters, including the Malaysian wild boar (*Sus barbatus*) that fell outside the two major-clades consisting pigs of Mekong regions and Chinese regions [12]. Similar to the previous studies, the Lanyu breed was found to be distantly related to other Chinese pigs [10,24]. The Malaysian wild boar was an independent lineage with a genetic distance of 0.036 from both of the other domestic pigs and wild boars. However, these pig breeds probably still belong to the Asian type.

In both phylogenetic trees of the control region and complete coding region, the Halang pig fell in the subgroup with South Chinese pigs. They have a close relationship and were probably formed from closely related maternal ancestors, but it remains to be investigated to make more clearly. This offers a historical trade hypothesis between Cao Bang and the neighbouring provinces of Southern China. Along with other commercial products, domestic animals such as Halang pigs are also commercially available. Over thousands of years, they have become indigenous animals of Vietnam. Previous study also indicated that pigs might have been domesticated independently from subspecies of the European and Asian wild boar populations [25]. From the phylogenetic trees it was revealed that wild boar subclades (e.g., WB Jiangxi, WB Fujian, WB Vietnam, WB Yunnan, and WB Hainan) were mainly distributed in South Asia, South East Asia and Chinese regions.

4. CONCLUSION

Our results suggest that there were close phylogenetic relationships between Halang pig and other Asian pig breeds, especially with Lantang pig from South China region. Together with the published report, there is a hypothesis was the Halang pig's origin belongs to South Chinese region. However, the other evolutionary evidence should be further studied and the origin of Halang pig needs to be clarified by other evolutionary research tools. The sequencing and phylogenetic analysis of whole mt genome of Halang pig will also be useful for genetic studies such as disease-resistance varieties and further evolutionary researches.

ETHICAL APPROVAL

As per international standard or university standard written ethical approval has been collected and preserved by the authors.

ACKNOWLEDGEMENT

"This research was funded by Vietnam National Foundation for Science and Technology Development (NAFOSTED) under grant number: 106-NN.05-2014.66".

COMPETING INTERESTS

Authors have declared that no competing interests exist.

REFERENCES

1. Lan H, Shi L. The origin and genetic differentiation of native breeds of pigs in southwest China: An approach from mitochondrial DNA polymorphism. *Biochem Genet.* 1993;31(1-2):51-60.
2. Tran TNT, Nia P, Chena J, Leb TT, Stevec K, Han J, Wanga H, Zhao S. The complete mitochondrial genome of Mong Cai pig (*Sus scrofa*) in Vietnam. *Mitochondrial DNA Part B.* 2016;1(1):226-227.
3. Watanabe T, Hayashi Y, Kimura J, Yasuda Y, Saitou N, Tomita T, Ogasawara N. Pig mitochondrial DNA: polymorphism, restriction map orientation, and sequence data. *Biochem Genet.* 1986;24(5-6):385-96.
4. Piper PJ. The Origins and Arrival of the Earliest Domestic Animals in Mainland and Island Southeast Asia: A Developing Story of Complexity, in *New Perspectives in Southeast Asian and Pacific Prehistory*, Piper PJ, Matsumura H, Bulbeck D, Editors. 2017, ANU Press, The Australian National University: Canberra, Australia. 251-273.
5. Cummins J. Mitochondrial DNA and the Y chromosome: Parallels and paradoxes. *Reproduction, Fertility and Development.* 2002;13(8):533-542.
6. Gongora J, Fleming P, Spencer PB, Mason R, Garkavenko O, Meyer J-N, Droegemueller C, Lee JH, Moran C. Phylogenetic relationships of Australian and New Zealand feral pigs assessed by mitochondrial control region sequence and nuclear GPIP genotype. *Molecular Phylogenetics and Evolution.* 2004; 33(2):339-348.
7. Imes DL, Wictum EJ, Allard MW, Sacks BN. Identification of single nucleotide polymorphisms within the mtDNA genome of the domestic dog to discriminate individuals with common HVI haplotypes.

- Forensic Science International: Genetics. 2012;6(5):630-639.
8. Sambrook J. PM, David Russell. Molecular Cloning: A Laboratory Manual. New York, USA: Cold Spring Harbor Laboratory Press; 2000.
 9. Sanger F, Nicklen S, Coulson AR. DNA sequencing with chain-terminating inhibitors. Proc Natl Acad Sci USA. 1977; 74(12):5463-7.
 10. Yu G, Xiang H, Wang J, Zhao X. The phylogenetic status of typical Chinese native pigs: Analyzed by Asian and European pig mitochondrial genome sequences. J Anim Sci Biotechnol. 2013; 4(1):9.
 11. Ghivizzani SC, Mackay SL, Madsen CS, Laipis PJ, Hauswirth WW. Transcribed heteroplasmic repeated sequences in the porcine mitochondrial DNA D-loop region. Journal of Molecular Evolution. 1993; 37(1):36-47.
 12. Wu C, Jiang Y, Chu H, Li S-H, Wang Y, Li Y, Chang Y, Ju Y. The type I Lanyu pig has a maternal genetic lineage distinct from Asian and European pigs. Animal genetics. 2007;38(5):499-505.
 13. Seemann T. Prokka: rapid prokaryotic genome annotation. Bioinformatics. 2014: btu153.
 14. Bernt M, Donath A, Jühling F, Externbrink F, Florentz C, Fritsch G, Pütz J, Middendorf M, Stadler PF. MITOS: Improved de novo metazoan mitochondrial genome annotation. Molecular Phylogenetics and Evolution. 2013;69(2): 313-319.
 15. Benson DA, Cavanaugh M, Clark K, Karsch-Mizrachi I, Lipman DJ, Ostell J, Sayers EW. GenBank. Nucleic acids research. 2013;41(D1):D36-D42.
 16. Altschul SF, Madden TL, Schäffer AA, Zhang J, Zhang Z, Miller W, Lipman DJ. Gapped BLAST and PSI-BLAST: A new generation of protein database search programs. Nucleic Acids Research. 1997; 25(17):3389-3402.
 17. Edgar RC. MUSCLE: Multiple sequence alignment with high accuracy and high throughput. Nucleic Acids Res. 2004;32(5): 1792-7.
 18. Tamura K, Dudley J, Nei M, Kumar S. MEGA4: Molecular evolutionary genetics analysis (MEGA) software version 4.0. Molecular Biology and Evolution. 2007; 24(8):1596-1599.
 19. Drummond AJ, Suchard MA, Xie D, Rambaut A. Bayesian phylogenetics with BEAUti and the BEAST 1.7. Mol Biol Evol. 2012;29(8):1969-73.
 20. Huelsenbeck JP, Ronquist F. MRBAYES: Bayesian inference of phylogenetic trees. Bioinformatics. 2001;17(8):754-755.
 21. Felsenstein J. Confidence Limits on Phylogenies: An approach using the bootstrap. Evolution. 1985;39(4):783-791.
 22. Ran ML, Liu Z, Yang AQ, Li Z, Chen B. The complete sequence of the mitochondrial genome of Lantang pig (*Sus scrofa*). Mitochondrial DNA A DNA Mapp Seq Anal. 2016;27(2):1376-7.
 23. MacKav DG. The theoretical epistemology: A new perspective on some long-standing methodological issues in psychology, in A handbook for data analysis in the behavioral sciences: Methodological issues, Lewis GKC, Editor. University of California: Los Angeles, USA. 1993;229-255.
 24. Chen CH, Huang HL, Yang HY, Lai SH, Yen NT, Wu MC, Huang MC. Mitochondrial genome of taiwan pig (*Sus scrofa*). African Journal of Biotechnology. 2011;10(13): 2556-2561.
 25. Okumura N, Kurosawa Y, Kobayashi E, Watanobe T, Ishiguro N, Yasue H, Mitsuhashi T. Genetic relationship amongst the major non-coding regions of mitochondrial DNAs in wild boars and several breeds of domesticated pigs. Animal genetics. 2001;32(3):139-147.

© 2018 Bui et al.; This is an Open Access article distributed under the terms of the Creative Commons Attribution License (<http://creativecommons.org/licenses/by/4.0>), which permits unrestricted use, distribution, and reproduction in any medium, provided the original work is properly cited.

Peer-review history:

The peer review history for this paper can be accessed here:
<http://prh.sdiarticle3.com/review-history/25113>